

# *Lucerna RF-TILT Series*

DRF Remote Controlled System



**Lucerna RF-TILT  
A65 & A80**



The new X-RAY generation  
Digital Radiography Solution



# LUCERNA RF-TILT

## ADVANCED SMART APPLICATION

**LUCERNA RF-TILT A80** is a remote-controlled R&F radiology system that, thanks to its dynamic detector, allows for a wide range of radiographic and fluoroscopic examinations. Its flexible configuration and its high performances make it an ideal solution for clinical environments requiring high productivity and optimal image quality.

**LUCERNA RF-TILT A80** è un sistema radiologico telecomandato R&F che, grazie al detettore dinamico, consente di eseguire una vasta gamma di esami radiografici e fluoroscopici. La sua configurazione flessibile e le elevate prestazioni lo rendono una soluzione ideale per ambienti clinici che richiedono un'elevata produttività e una qualità dell'immagine ottimale.



## PROFESSIONAL IMAGE PROCESSING

**Versatile and high-performing: Lucerna RF-TILT A80** delivers excellent image quality for all patient types, pediatric and adults, optimizing exam times thanks to a sophisticated acquisition and post-processing software. All this while ensuring maximum safety, with the dose reduced to its minimum.

**Versatile e performante: Lucerna RF-TILT A80** offre immagini di eccellente qualità per qualsiasi tipo di paziente, pediatrici e adulti, ottimizzando i tempi di esame grazie a un sofisticato software di acquisizione e post-elaborazione. Il tutto garantendo la massima sicurezza, con la dose di ridotta al minimo.



**Lucerna RF-TILT  
A65 & A80**

**Lucerna RF-TILT  
A50**



The new X-RAY generation  
Digital Radiography Solution



# LUCERNA RF-TILT

**LUCERNA RF-TILT A50** is the ideal solution to optimize radiology workflows. Fast, accurate, and easy to use, the Lucerna RF-TILT A50 is equipped with a dynamic detector that guarantees exceptional image quality while ensuring a reduced dose for all patient types.

**LUCERNA RF-TILT A50** è la soluzione ideale per ottimizzare i flussi di lavoro radiologici. Veloce, preciso e facile da usare, il sistema Lucerna RF-TILT A50 è dotato di un detettore dinamico che garantisce immagini di eccezionale qualità garantendo una dose ridotta a tutte le tipologie di paziente.



## PROFESSIONAL IMAGE PROCESSING

**Versatile and high-performing: Lucerna RF-TILT A50** delivers excellent image quality for all patient types, pediatric and adults, optimizing exam times thanks to a sophisticated acquisition and post-processing software. All this while ensuring maximum safety, with the dose reduced to its minimum.

**Versatile e performante: Lucerna RF-TILT A50** offre immagini di eccellente qualità per qualsiasi tipo di paziente, pediatrici e adulti, ottimizzando i tempi di esame grazie a un sofisticato software di acquisizione e post-elaborazione. Il tutto garantendo la massima sicurezza, con la dose di ridotta al minimo.

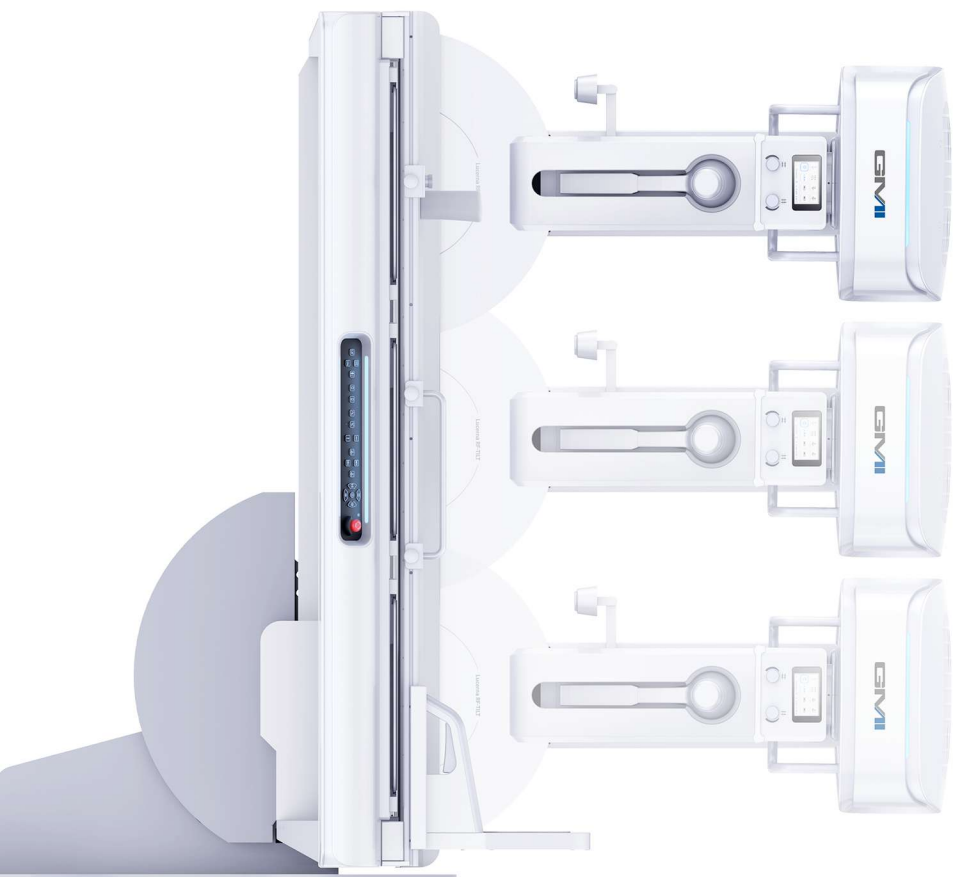
**Lucerna RF-TILT  
A50**

## ADVANCED IMAGE PROCESSING

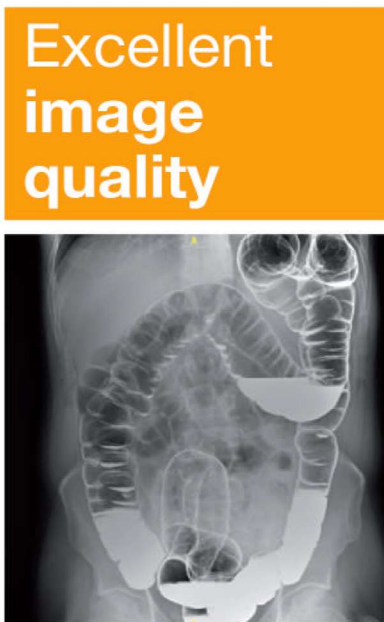
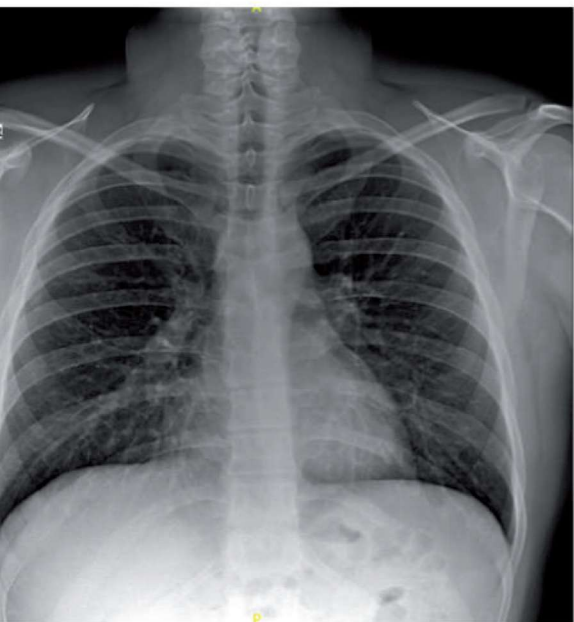
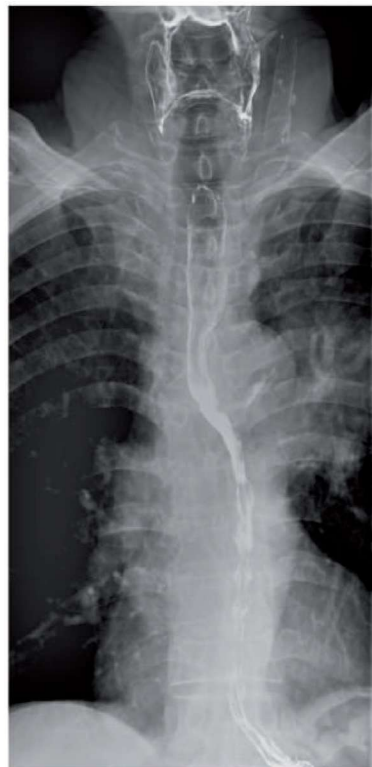
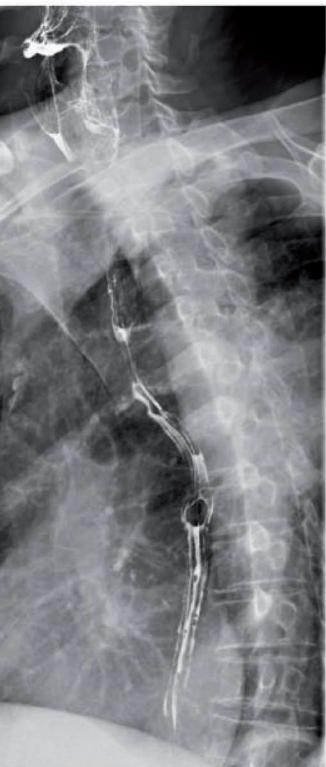
**GMI's DXRayDiagnost** software simplifies radiology workflows by providing advanced image processing techniques and a wide range of post-processing functions. This user-friendly software enhances image quality and reduces patient dose, improving the overall efficiency of image analysis.

**DXRayDiagnost** is fully compliant with RIS-PACS systems, completely streamlining the workflow.

- Excellent image quality
- Dose reduction and report
- Advanced measurement & annotations
- Automatic & virtual collimation
- FULL DICOM compatibility
- Advanced post-processing algorithms
- Automatic Long Bone Stitching
- Pneumoconiosis Examination







Excellent  
image  
quality

**Lucerna RF-TILT  
Series**

# The Swiss Accuracy

GMI is a registered trademarks of General Medical Italia Ltd., all rights reserved.

Because of certain regional limitations of sales rights and service availability, we cannot guarantee that all products included in this brochure are available through the GMI sales organization worldwide.

Availability and packaging may vary by country and is subject to change without prior notice.

The information in this document contains general technical descriptions of specifications and options as well as standard and optional features which do not always have to be present in individual cases.

Specifications and designs are subject to change without notice, GMI reserves the right to modify the design, packaging, specifications and options described herein without prior notice.

Note: Any technical data contained in this document may vary within defined tolerances.



**General Medical Italia Ltd**

#### **ENGLAND**

17 Carlisle Street, W1D 3BU London (UK)  
Tel. +44(0) 207 283 7489 - [www.gmitalia.co.uk](http://www.gmitalia.co.uk)

#### **SWITZERLAND**

Piazzetta L. Fontana 4 -6850 - Mendrisio (CH)  
Tel +41 (0)76 534 0461 - [www.gmint.ch](http://www.gmint.ch)

#### **ITALY**

Via Enrico Fermi 26 – 24050 Grassobbio (BG)  
Tel +39 035 65 948 11 - [www.gmint.ch](http://www.gmint.ch)

